

# Correct Sitting Positions

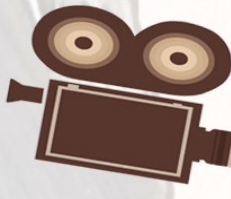


Ideal For Playing Electric  
Guitar



Best Suited For Acoustic &  
Classical Guitar

## Camera Placement



Camera

Should be placed at  
eye level, slightly  
tilted down

Both your hands should be  
clearly visible on the  
screen

We strongly advise you use a  
computer and not a mobile phone



# Mic Placement

## Microphone

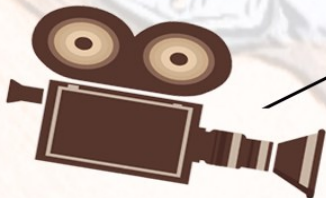
Should be placed between the camera and you

It should be pointed towards the hole in the guitar body

Good audio quality is essential in making your online class effective



# Lighting



## Lights

Should be placed either between the camera & you or on top of the camera pointed towards you

We recommend you use a yellow or sunlight colored light bulb for the session

Good lighting is essential for an effective session. It allows the teacher to clearly observe your hand techniques & guide you

