

Recommended Equipment



Chair Without Arms

Use a chair without arms with adequate back support

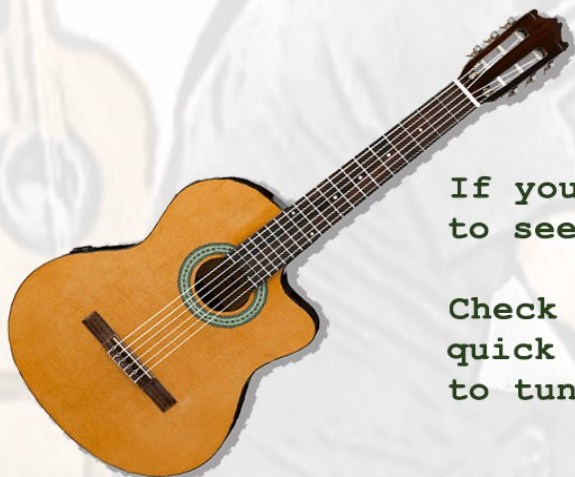
Ideally you should have atleast 3 feet of empty space on your left and right side

Computer & Internet

We recommend you use a Computer & not a Smartphone for the sessions

A minimum internet speed of 16 Mbps is advised for a good quality session

Use wired Ethernet / Wifi. Do not use mobile internet / hotspot



Guitar

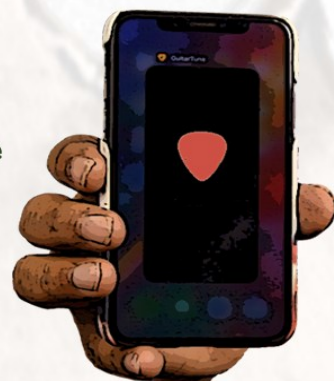
If you need to buy a new guitar, [Click Here](#) to see recommended guitars for beginners

Check out this video on our channel for a quick introduction to your guitar and how to tune it --> <https://youtu.be/t-AKHAPaHn8>

Tuner

There are many guitar tuning apps available on smartphones

We recomend you download one of these apps and tune your guitar to the 'STANDARD E' tuning



Recommended Equipment

Microphone



We advise that you use an external mic, [Click Here](#) to see some recommended mics that are best suited for your online session

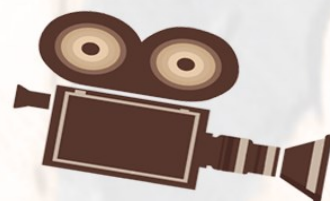
If you cannot get an external mic, then use either your computer mic or a mic that comes with a mobile headphone

Camera

Use an HD webcam connected to your computer

If you dont have a good webcam, then you can also connect your smartphone to your computer and use it as an external camera

There are many apps available on the Apple & Google Play store that allow you to do this



Speakers



Learning an instrument via video call has different audio requirements than a normal call where only one person is speaking at a time

For best results, use speakers or headphones that can connect to your computer with a long wire

Try and avoid using bluetooth speakers